



Larval Fish Identification and Fish Early Life History Science

Fish Larval Identification Result

Prepared by

Mr. Tran Nhat Anh and Mr. Pham Xuan Thai
(Research institute for marine fisheries)

Fish Larval Identification Result



Nemipteridae



Scombridae



Clupeidae



Carangidae (*Atule mate*)



Lutjaidae

Family: Nemipteridae



Scombridae (T 98)

Sampling ST: 72, Sampling date: 09/10/2018

Mesh size: 330 μ m

Family: **Nemipteridae**

Genus:

Science name:

Measurements:

SL: 4.92 mm

HL: 1.82 mm

BD: 1.60 mm

SnL: 0.51 mm

ED: 0.65 mm

PAL: 2.68 mm

PDL: 2.03 mm

Myomere: 24

Description:

Body shape: Moderate and compressed (BD is 32.5% of SL)

Gut: Round and coiled reaches to mid body (PAL 54,5% SL)

Head: Moderate and rounded dorsally (HL 37% SL)

Snout: Short and steeply sloped (SnL 28% HL)

Head spination: None

Eyes: Large and round (ED 35,7% HL)

Pigment: Disappear on this specimen

Fin: Not completion

Family: Scombridae



Description:

Body shape: Moderate and tail tapering

Gut: Round and coiled reaches to mid body

Head: Large (HL is 50% of SL)

Snout: Pointed and elongate (SnL 40.5% HL)

Spination: Spines present on preopercular, supraoccipital spine absent

Pigment: None

Fin: Fins are not completed, first dorsal fin develops prior to second dorsal fin

Thunnus tonggol (T 102)

Sampling ST: 18

Mesh size: 500 μ m

Family: **Scombridae**

Genus:

Science name:

Measurements:

SL: 4.42 mm

HL: 2.22 mm

BD: 1.49 mm

SnL: 0.90 mm

ED: 0.65 mm

PAL: 2.40 mm

PDL: 2.34 mm

Myomere: 39

Family: Carangidae



Description:

Body shape: Moderate (BD is 37.8% of SL)

Gut: Round and coiled reaches to mid body (PAL 50.3% SL)

Head: Large (HL 35.2% SL). Eyes are round and moderate

Snout: Triangular (SnL 34.4% HL)

Head spination: Disappear

Pigment: Pigment distribution on body, on head, base dorsal and penvic fin, pigment present along myoseptum

Fin: Fins are fully completed. D VIII-I, 24; A II-I, 20; C 9+8

***Caragoides* sp. (52)**

Sampling ST: 44 (Gulf of Thailand)

Mesh size: 500 μ m (Bongo net)

Family: **Carangidae**

Genus: *Atule*

Science name: *Atule mate*

Measurements:

SL: 12.95 mm

HL: 4.56 mm

BD: 4.90 mm

SnL: 1.57 mm

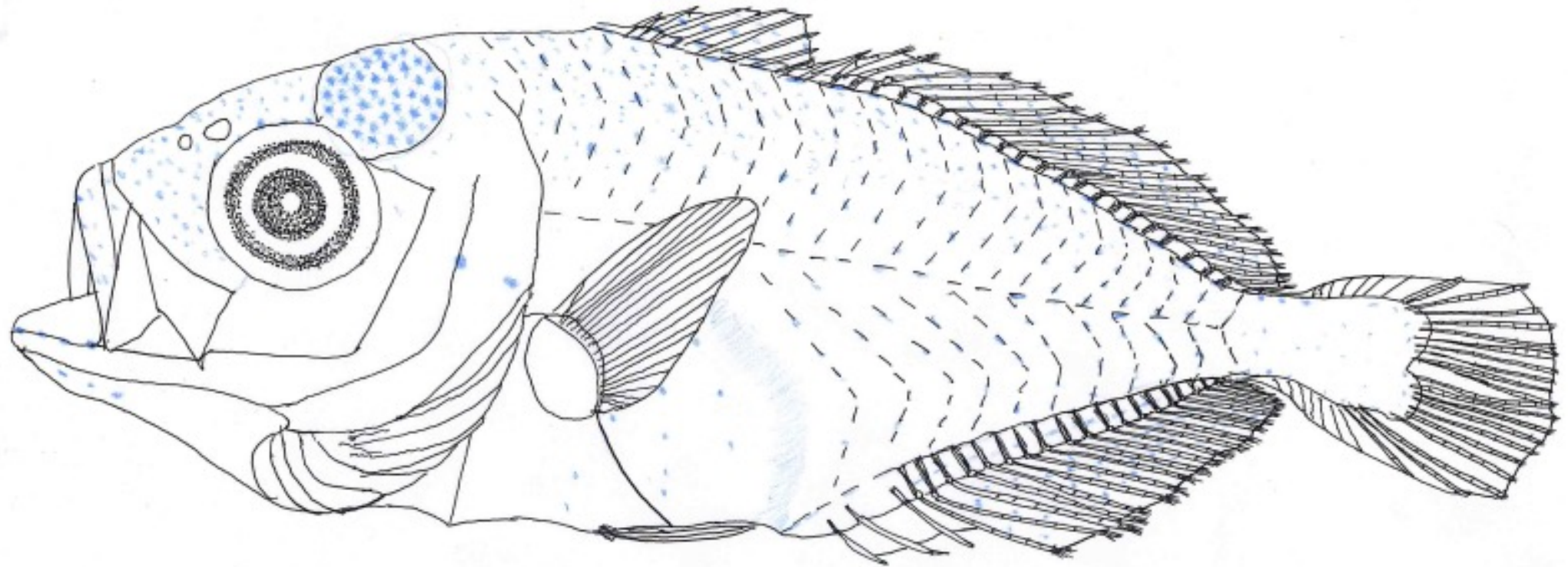
ED: 1.11 mm

PAL: 7.03 mm

PDL: 5.36 mm

Myomere:

Atule mate



AS

22.11.2022

Family: Clupeidae



Description:

Body shape: Very elongate

Gut: Striated and elongate (PAL is 82.4% of SL)

Head: Moderate and compressed (HL 15.2% SL)

Snout: Moderate and pointed (SnL 26.5% HL)

Head spination: None

Pigment: Linear pigment develops ventrolaterally

Fin: Fin rays are present. D 16; A 16, C 9+8

Clupeidae (52)

Sampling ST: 44, sampling date: 05/02/25
(Neuston net)

Family: **Clupeidae**

Genus:

Science name:

Measurements:

SL: 11.15 mm

HL: 1.70 mm

BD: 0.90 mm

SnL: 0.45 mm

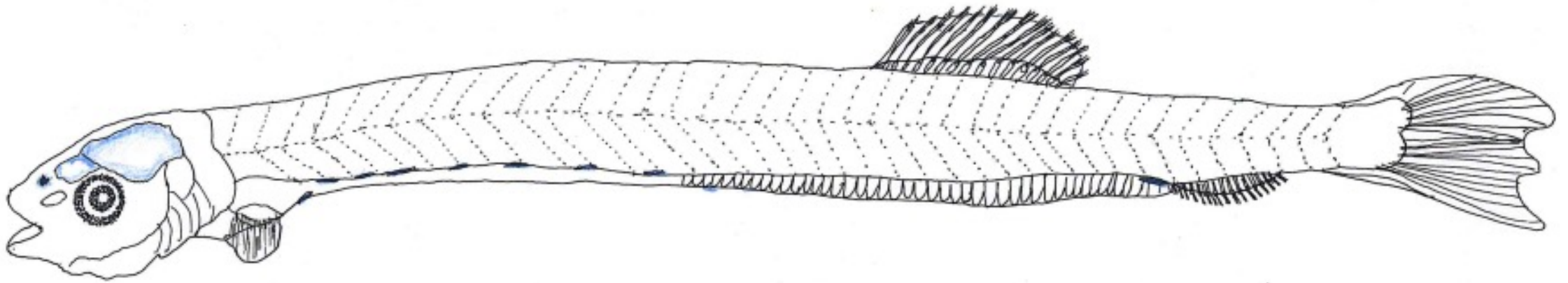
ED: 0.40 mm

PAL: 9.19 mm

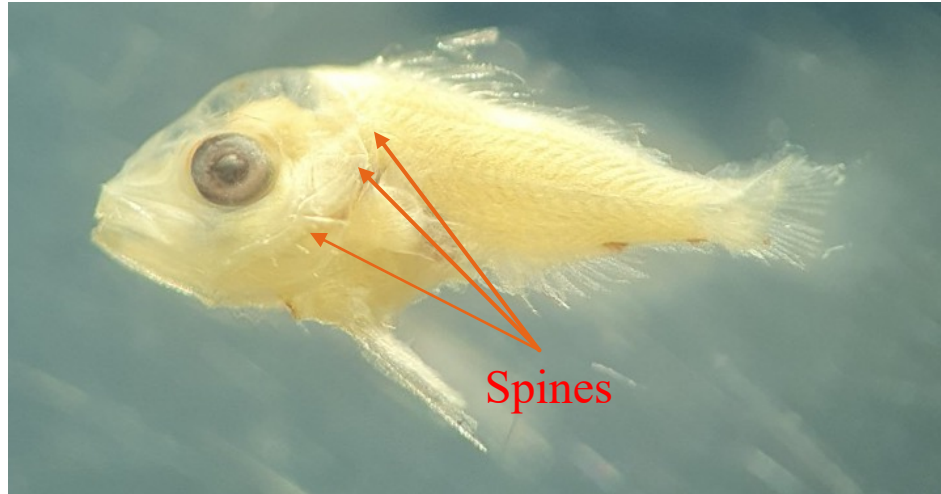
PDL: 6.99 mm

Myomere: 40

Clupeidae



Family: Lutjanidae



Description

Body shape: Deep (BD is 42.7% of SL)

Gut: Coiled and triangular, extends to around mid body (PAL 53.1% SL)

Head: Large (HL 36.8% SL)

Snout: Moderate, concave in the dorsal profile and slightly pointed (SnL 28.6% HL)

Head spination: Spines form on the preopercular, opercular, supracleithral, spines on preopercle are large

Pigment: present on cleithral symphysis, ventral of tail

Fin: D X, 13; A III, 8

(52)
05 B (0,3) 14 - 7

Family: **Lutjanidae**

Genus:

Science name:

Measurements:

SL: 4.75 mm

HL: 1.75 mm

BD: 2.03 mm

SnL: 0.50 mm

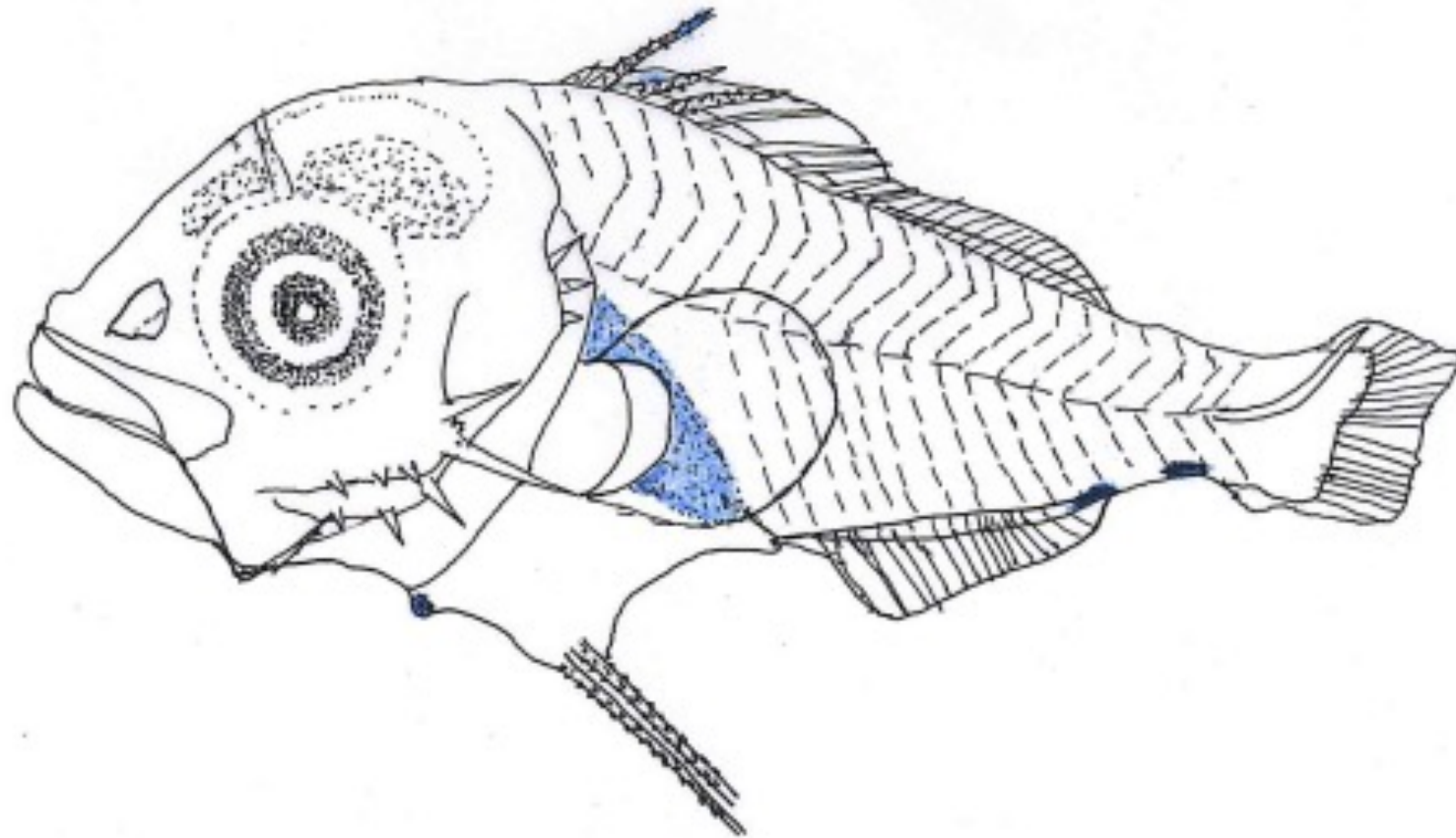
ED: 0.54 mm

PAL: 2.52 mm

PDL: 1.67 mm

Myomere: 24

Lutjanidae



Some fish species in Vietnam waters



Scombridae (*Rastrelliger kanagurta*)



Engraulidae (*Stolephorus indicus*)



Carangidae (*Atule mate*)



Lutjanidae (*Lutjanus carponotatus*)

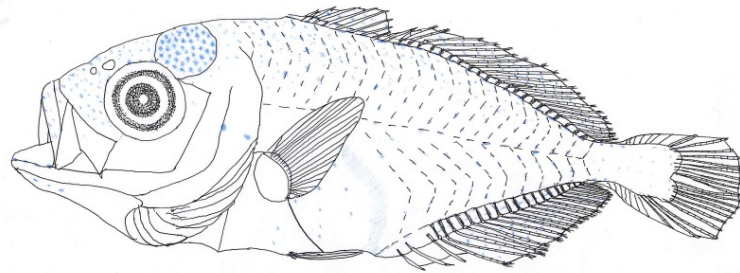


Serranidae (*Epinephelus awoara*)



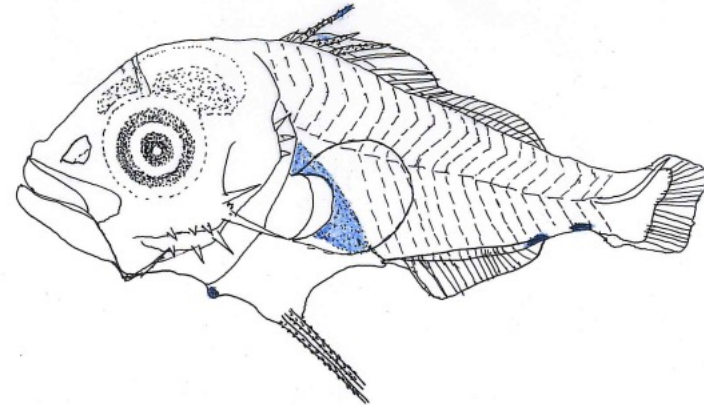
Siganidae (*Siganus javus*)

THANK FOR YOUR ATTENTION!

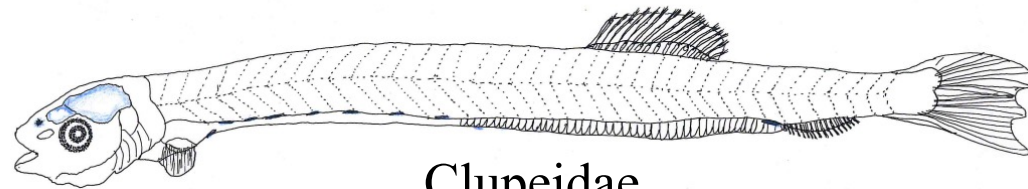


Atule mate

AS
22.11.2022



Lutjanidae



Clupeidae